

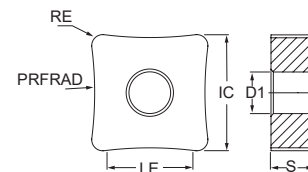
TOOLING SOLUTIONS FOR


SCARFING

TURNING
Solutions

SCARFING - SNMA

NEGATIVE INSERTS | PASTILHAS NEGATIVAS | PLAQUITAS NEGATIVAS



Inserts Pastilhas Plaquetas	(1) Geometry code	(2) Grade code		P	M	Dimensions (mm) Dimensões (mm) Dimensiones (mm)						Tube Diameter (mm)
				CVD	CVD	IC	S	LE	RE	D1	PRFRAD	
				L8	L8							
		ISO Reference	ANSI Reference	PH5,12,5	PH5,12,5							
	1123927	SNMA 150612-R020	SNMA 543-R020	○	○	15,88	6,35	10	1,2	6,35	20	23-29
	1123928	SNMA 150612-R022	SNMA 543-R022	○	○	15,88	6,35	10	1,2	6,35	22	25-32
	1123929	SNMA 150612-R025	SNMA 543-R025	○	○	15,88	6,35	10	1,2	6,35	25	29-36
	1123930	SNMA 150612-R027	SNMA 543-R027	○	○	15,88	6,35	10	1,2	6,35	27	31-39
	1123931	SNMA 150612-R030	SNMA 543-R030	○	○	15,88	6,35	10	1,2	6,35	30	35-44
	1123932	SNMA 150612-R035	SNMA 543-R035	○	○	15,88	6,35	10	1,2	6,35	35	40-51
	1123933	SNMA 150612-R040	SNMA 543-R040	○	○	15,88	6,35	10	1,2	6,35	40	46-58
	1123934	SNMA 150612-R050	SNMA 543-R050	○	○	15,88	6,35	10	1,2	6,35	50	58-73
	1123935	SNMA 150612-R060	SNMA 543-R060	○	○	15,88	6,35	10	1,2	6,35	60	69-87
	1123936	SNMA 150612-R070	SNMA 543-R070	○	○	15,88	6,35	10	1,2	6,35	70	80-95
SNMA  Roughing	1123937	SNMA 190612-R030	SNMA 643-R030	○	○	19,05	6,35	12	1,2	7,94	30	35-44
	1123938	SNMA 190612-R040	SNMA 643-R040	○	○	19,05	6,35	12	1,2	7,94	40	46-58
	1123939	SNMA 190612-R050	SNMA 643-R050	○	○	19,05	6,35	12	1,2	7,94	50	58-73
	1123940	SNMA 190612-R060	SNMA 643-R060	○	○	19,05	6,35	12	1,2	7,94	60	69-87
	1123941	SNMA 190612-R070	SNMA 643-R070	○	○	19,05	6,35	12	1,2	7,94	70	80-95
	1123942	SNMA 190612-R080	SNMA 643-R080	○	○	19,05	6,35	12	1,2	7,94	80	92-116
	1123943	SNMA 190612-R090	SNMA 643-R090	○	○	19,05	6,35	12	1,2	7,94	90	104-131
	1123944	SNMA 250924-R000	SNMA 866-R000	○	○	25,40	9,52	17	2,4	9,12	0	-
	1123945	SNMA 250924-R060	SNMA 866-R060	○	○	25,40	9,52	17	2,4	9,12	60	69-87
	1123946	SNMA 250924-R070	SNMA 866-R070	○	○	25,40	9,52	17	2,4	9,12	70	80-95
1123947	SNMA 250924-R080	SNMA 866-R080	○	○	25,40	9,52	17	2,4	9,12	80	92-116	
1123948	SNMA 250924-R100	SNMA 866-R100	○	○	25,40	9,52	17	2,4	9,12	100	115-145	
1123949	SNMA 250924-R150	SNMA 866-R150	○	○	25,40	9,52	17	2,4	9,12	150	165-215	
1123950	SNMA 250924-R200	SNMA 866-R200	○	○	25,40	9,52	17	2,4	9,12	200	230-290	

🔴 First choice | 1ª Escolha | 1ª Opción

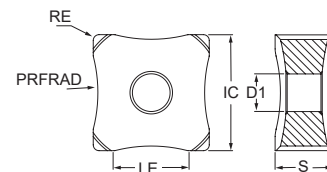
○ Available under request | Disponível sob consulta | Disponible bajo consulta


Insert Order Code: ⁽¹⁾ Geometry code + ⁽²⁾ Grade code

🟢 Stock Items | Itens de stock

SCARFING - SNMX

NEGATIVE INSERTS | PASTILHAS NEGATIVAS | PLAQUITAS NEGATIVAS



				P	M	Dimensões (mm) Dimensões (mm) Dimensiones (mm)						Tube Diameter (mm)
				CVD	CVD							
				L8	L8							
		(2) Grade code										
Inserts Pastilhas Plaquetas	(1) Geometry code	ISO Reference	ANSI Reference	PH5,125	PH5,125	IC	S	LE	RE	D1	PRFRAD	
	1123879	SNMX 150708-R000	SNMX 552-R000	○	○	15,88	7,94	10	0,8	5,16	0	-
	1123880	SNMX 150708-R007	SNMX 552-R007	○	○	15,88	7,94	10	0,8	5,16	7	08-10
	1123881	SNMX 150708-R009	SNMX 552-R009	○	○	15,88	7,94	10	0,8	5,16	9	10-13
	1123882	SNMX 150708-R011	SNMX 552-R011	○	○	15,88	7,94	10	0,8	5,16	11	13-16
	1123883	SNMX 150708-R013	SNMX 552-R013	○	○	15,88	7,94	10	0,8	5,16	13	15-19
	1123884	SNMX 150708-R015	SNMX 552-R015	○	○	15,88	7,94	10	0,8	5,16	15	17-22
	1123885	SNMX 150708-R018	SNMX 552-R018	○	○	15,88	7,94	10	0,8	5,16	18	21-26
	1123886	SNMX 150708-R020	SNMX 552-R020	⊗	⊗	15,88	7,94	10	0,8	5,16	20	23-29
	1123887	SNMX 150708-R022	SNMX 552-R022	○	○	15,88	7,94	10	0,8	5,16	22	25-32
	1123888	SNMX 150708-R025	SNMX 552-R025	○	○	15,88	7,94	10	0,8	5,16	25	29-36
	1123889	SNMX 150708-R027	SNMX 552-R027	○	○	15,88	7,94	10	0,8	5,16	27	31-39
	1123890	SNMX 150708-R030	SNMX 552-R030	○	○	15,88	7,94	10	0,8	5,16	30	35-44
	1123891	SNMX 150708-R035	SNMX 552-R035	○	○	15,88	7,94	10	0,8	5,16	35	40-51
	1123892	SNMX 150708-R040	SNMX 552-R040	○	○	15,88	7,94	10	0,8	5,16	40	46-58
	1123893	SNMX 150708-R045	SNMX 552-R045	○	○	15,88	7,94	10	0,8	5,16	45	52-65
	1123894	SNMX 150708-R050	SNMX 552-R050	○	○	15,88	7,94	10	0,8	5,16	50	58-73
	1123895	SNMX 150708-R060	SNMX 552-R060	○	○	15,88	7,94	10	0,8	5,16	60	69-87
SNMX  Medium to Finishing	1124461	SNMX 150708-R070	SNMX 552-R070	○	○	15,88	7,94	10	0,8	5,16	70	80-95
	1124462	SNMX 150708-R075	SNMX 552-R075	○	○	15,88	7,94	10	0,8	5,16	75	86-102
	1123896	SNMX 190912-R000	SNMX 663-R000	○	○	19,05	9,12	12	1,2	6,35	0	-
	1122012	SNMX 190912-R020	SNMX 663-R020	⊗	⊗	19,05	9,12	12	1,2	6,35	20	23-29
	1123897	SNMX 190912-R030	SNMX 663-R030	⊗	⊗	19,05	9,12	12	1,2	6,35	30	35-44
	1123898	SNMX 190912-R040	SNMX 663-R040	⊗	⊗	19,05	9,12	12	1,2	6,35	40	46-58
	1123899	SNMX 190912-R050	SNMX 663-R050	⊗	⊗	19,05	9,12	12	1,2	6,35	50	58-73
	1122013	SNMX 190912-R060	SNMX 663-R060	○	○	19,05	9,12	12	1,2	6,35	60	69-87
	1123900	SNMX 190912-R070	SNMX 663-R070	○	○	19,05	9,12	12	1,2	6,35	70	80-95
	1123901	SNMX 190912-R080	SNMX 663-R080	○	○	19,05	9,12	12	1,2	6,35	80	92-116
	1123902	SNMX 190912-R090	SNMX 663-R090	○	○	19,05	9,12	12	1,2	6,35	90	104-131
	1123903	SNMX 190912-R100	SNMX 663-R100	○	○	19,05	9,12	12	1,2	6,35	100	115-145
	1123864	SNMX 251216-R000	SNMX 884-R000	⊗	⊗	25,40	12,70	17	1,6	9,12	0	-
	1123904	SNMX 251216-R050	SNMX 884-R050	⊗	⊗	25,40	12,70	17	1,6	9,12	50	58-73
	1122015	SNMX 251216-R080	SNMX 884-R080	⊗	⊗	25,40	12,70	17	1,6	9,12	80	92-116
	1123905	SNMX 251216-R090	SNMX 884-R090	⊗	⊗	25,40	12,70	17	1,6	9,12	90	104-131
	1123906	SNMX 251216-R100	SNMX 884-R100	⊗	⊗	25,40	12,70	17	1,6	9,12	100	115-145
	1122016	SNMX 251216-R120	SNMX 884-R120	⊗	⊗	25,40	12,70	17	1,6	9,12	120	138-174
	1123907	SNMX 251216-R150	SNMX 884-R150	⊗	⊗	25,40	12,70	17	1,6	9,12	150	165-215
	1123908	SNMX 251216-R200	SNMX 884-R200	⊗	⊗	25,40	12,70	17	1,6	9,12	200	230-290
	1123909	SNMX 251216-R250	SNMX 884-R250	⊗	⊗	25,40	12,70	17	1,6	9,12	250	275-315

⊗ First choice | 1ª Escolha | 1ª Opción

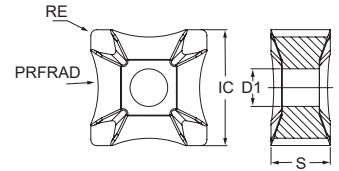
○ Available under request | Disponível sob consulta | Disponible bajo consulta

Insert Order Code: (1) Geometry code + (2) Grade code

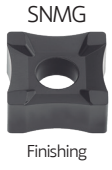
⊗ Stock Items | Itens de stock

SCARFING - SNMG

NEGATIVE INSERTS | PASTILHAS NEGATIVAS | PLAQUITAS NEGATIVAS



				P	M	Dimensions (mm) Dimensões (mm) Dimensiones (mm)						Tube Diameter (mm)
				CVD	CVD							
		(2) Grade code		L7	L8							
Inserts Pastilhas Plaquetas	(1) Geometry code	ISO Reference	ANSI Reference	PH5115	PH5125	IC	S	A	Re	D1	PRFRAD	
	1123951	SNMG 15M808-R000	SNMG 55.12-R000	○	○	15,88	8,15	10	0,8	5,16	0	-
	1123952	SNMG 15M808-R007	SNMG 55.12-R007	○	○	15,88	8,15	10	0,8	5,16	7	08-10
	1123953	SNMG 15M808-R009	SNMG 55.12-R009	○	○	15,88	8,15	10	0,8	5,16	9	10-13
	1123954	SNMG 15M808-R011	SNMG 55.12-R011	⊗	○	15,88	8,15	10	0,8	5,16	11	13-16
	1123955	SNMG 15M808-R013	SNMG 55.12-R013	⊗	○	15,88	8,15	10	0,8	5,16	13	15-19
	1123956	SNMG 15M808-R015	SNMG 55.12-R015	⊗	○	15,88	8,15	10	0,8	5,16	15	17-22
	1123957	SNMG 15M808-R018	SNMG 55.12-R018	⊗	○	15,88	8,15	10	0,8	5,16	18	21-26
	1123958	SNMG 15M808-R020	SNMG 55.12-R020	⊗	○	15,88	8,15	10	0,8	5,16	20	23-29
	1123959	SNMG 15M808-R022	SNMG 55.12-R022	○	○	15,88	8,15	10	0,8	5,16	22	25-32
	1123960	SNMG 15M808-R025	SNMG 55.12-R025	⊗	○	15,88	8,15	10	0,8	5,16	25	29-36
	1123961	SNMG 15M808-R027	SNMG 55.12-R027	⊗	○	15,88	8,15	10	0,8	5,16	27	31-39
	1123962	SNMG 15M808-R030	SNMG 55.12-R030	⊗	○	15,88	8,15	10	0,8	5,16	30	35-44
	1123963	SNMG 15M808-R035	SNMG 55.12-R035	⊗	○	15,88	8,15	10	0,8	5,16	35	40-51
	1123964	SNMG 15M808-R040	SNMG 55.12-R040	⊗	○	15,88	8,15	10	0,8	5,16	40	46-58
	1123965	SNMG 15M808-R045	SNMG 55.12-R045	⊗	○	15,88	8,15	10	0,8	5,16	45	52-65
	1123966	SNMG 15M808-R050	SNMG 55.12-R050	○	○	15,88	8,15	10	0,8	5,16	50	58-73
	1123967	SNMG 15M808-R060	SNMG 55.12-R060	⊗	○	15,88	8,15	10	0,8	5,16	60	69-87
	1123968	SNMG 19M808-R000	SNMG 65.13-R000	○	○	19,05	8,15	12	0,8	8,00	20	-
	1123969	SNMG 19M808-R010	SNMG 65.13-R010	○	○	19,05	8,15	12	0,8	8,00	10	12-15
	1123970	SNMG 19M808-R020	SNMG 65.13-R020	⊗	○	19,05	8,15	12	0,8	8,00	20	23-29
	1123971	SNMG 19M808-R030	SNMG 65.13-R030	⊗	○	19,05	8,15	12	0,8	8,00	30	35-44
	1123972	SNMG 19M808-R040	SNMG 65.13-R040	○	○	19,05	8,15	12	0,8	8,00	40	46-58
	1123973	SNMG 19M808-R050	SNMG 65.13-R050	○	○	19,05	8,15	12	0,8	8,00	50	58-73
	1123974	SNMG 19M808-R060	SNMG 65.13-R060	○	○	19,05	8,15	12	0,8	8,00	60	69-87
	1123975	SNMG 19M808-R070	SNMG 65.13-R070	○	○	19,05	8,15	12	0,8	8,00	70	80-95
	1123976	SNMG 19M808-R080	SNMG 65.13-R080	○	○	19,05	8,15	12	0,8	8,00	80	92-116
	1123977	SNMG 19M808-R090	SNMG 65.13-R090	○	○	19,05	8,15	12	0,8	8,00	90	104-131
	1123978	SNMG 19M808-R100	SNMG 65.13-R100	○	○	19,05	8,15	12	0,8	8,00	100	115-145



⊗ First choice | 1ª Escolha | 1ª Opción

○ Available under request | Disponível sob consulta | Disponible bajo consulta

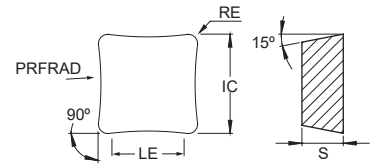
Insert Order Code: (1) Geometry code + (2) Grade code


⊗ Stock Items | Itens de stock

SCARFING - SDMX

POSITIVE INSERTS | PASTILHAS POSITIVAS | PLAQUITAS POSITIVAS

RELIEF ANGLE 15°



				P	M	Dimensions (mm) Dimensões (mm) Dimensiones (mm)						Tube Diameter (mm)
				CVD	CVD							
				(2) Grade code								
				L8	9B							
Inserts Pastilhas Plaquetas	(1) Geometry code	ISO Reference	ANSI Reference	PH5125	PHY125	IC	S	LE	RE	D1	PRFRAD	
 SDMX Medium to Finishing	1124752	SDMX 250616-R000	SDMX 250616-R000	<input type="radio"/>	<input type="radio"/>	25,40	6,35	20	1,60	-	0	-
	1124822	SDMX 250616-R080	SDMX 250616-R080	<input type="radio"/>	<input checked="" type="radio"/>	25,40	6,35	20	1,60	-	80	92-116
	1124753	SDMX 250616-R180	SDMX 250616-R180	<input type="radio"/>	<input type="radio"/>	25,40	6,35	20	1,60	-	180	210-270
	1124754	SDMX 250616-R300	SDMX 250616-R300	<input type="radio"/>	<input checked="" type="radio"/>	25,40	6,35	20	1,60	-	300	340-410
	1124755	SDMX 250616-R400	SDMX 250616-R400	<input type="radio"/>	<input type="radio"/>	25,40	6,35	20	1,60	-	400	440-520
	1124756	SDMX 250616-R550	SDMX 250616-R550	<input type="radio"/>	<input type="radio"/>	25,40	6,35	20	1,60	-	550	600-700
	1124757	SDMX 350900-R000	SDMX 350900-R000	<input type="radio"/>	<input type="radio"/>	35,00	9,60	30	-	-	0	-
	1124758	SDMX 350900-R105	SDMX 350900-R105	<input type="radio"/>	<input type="radio"/>	35,00	9,60	30	-	-	105	115-145
	1124759	SDMX 350900-R145	SDMX 350900-R145	<input type="radio"/>	<input type="radio"/>	35,00	9,60	30	-	-	145	160-210
	1124760	SDMX 350900-R300	SDMX 350900-R300	<input type="radio"/>	<input type="radio"/>	35,00	9,60	30	-	-	300	340-410
	1124761	SDMX 350900-R400	SDMX 350900-R400	<input type="radio"/>	<input type="radio"/>	35,00	9,60	30	-	-	400	440-520
	1124762	SDMX 350900-R550	SDMX 350900-R550	<input type="radio"/>	<input type="radio"/>	35,00	9,60	30	-	-	550	600-700

First choice | 1ª Escolha | 1ª Opción

Available under request | Disponível sob consulta | Disponible bajo consulta

Insert Order Code: ⁽¹⁾Geometry code + ⁽²⁾Grade code

Stock Items | Itens de stock

TOOLING SOLUTIONS FOR

SCARFING



HEADQUARTERS

PALBIT. S.A.

T (+351) 234 540 300 | F (+351) 234 540 301

palbit@palbit.pt | www.palbit.pt

Branch office

PALBIT México, S de RL de CV

T (+52) 5555 454 543 | F (+52) 5552 509 190

info@palbit.com.mx | www.palbit.pt/mx

Branch office

PALBIT Brasil

T (+55) 011 25 343 648

palbit@palbit.com.br | www.palbit.pt/br