

Blanks and Toolholders for Forming Grooving



FORMING
Grooving



SINCE 1916

BLANKS



1 - Product Line

FG - Forming Grooving

2 - Product type

I - Insert

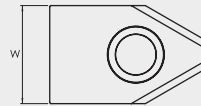
3 - Edge width (W)

13 - 13mm

16 - 16mm


20 - 20mm

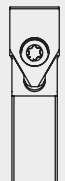


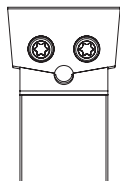
32 - 32mm

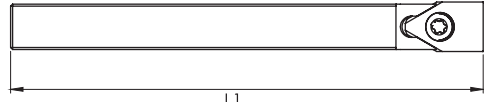





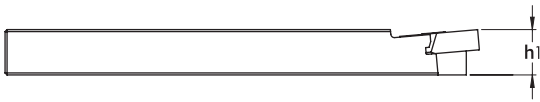
1 - Product Line	2 - Cutting Width
FG - Forming Grooving	H - Holder


3 - Edge Width (Forming)	
	13 - 13 mm
	16 - 16 mm
	20 - 20 mm
	32 - 32 mm (2 holes)

4 - Toolholder Type (Forming)			
Type A	Type B	Type C	Type C
			

5 - Toolholder total length	
	125 - 125 mm
	150 - 150 mm

6 - Toolholder depth	
	10 - 10 mm
	12 - 12 mm
	14 - 14 mm
	16 - 16 mm
	20 - 20 mm

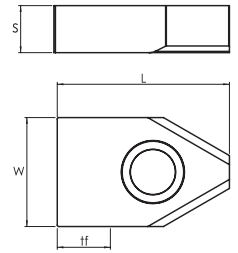
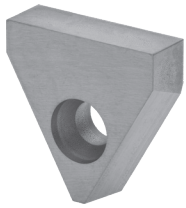
7 - Insert height	
	10 - 10 mm
	12 - 12 mm
	14 - 14 mm
	16 - 16 mm
	25 - 25 mm

8 - Insert relief angle	
	0°
	5°

FORMING GROOVING

BLANKS & TOOLHOLDERS

FGI



(1) Geometry code	(2) Grade code	UNC PH0930	Dimensions			
			W	S	L	tf
1130550	BLANK FGI 13	☉	13	5,35	20,70	6,00
1130551	BLANK FGI 16	☉	16	5,35	25,00	10,00
1130552	BLANK FGI 20	☉	20	6,35	20,70	7,00
1130615	BLANK FGI 20 L	☉	20	6,35	25,00	11,00

☉ Stock item | Produto de stock | Itens de stock

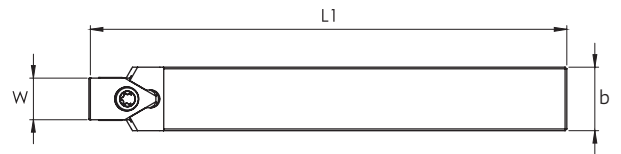
○ Available under request | Disponível sobre consulta | Disponible bajo consulta

Insert order code = (1) Geometry Code + (2) Grade Code

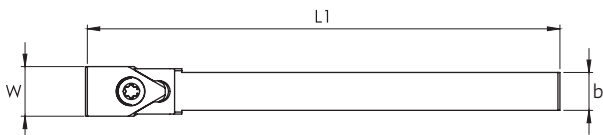
Type A



Type B



Type C



Type A|B|C

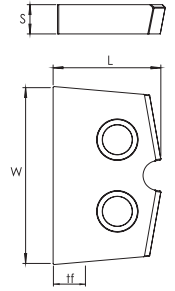
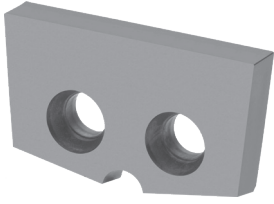


Order code		ISO Reference	Dimensions					Insert	Toolholder Type	Stock	
*a 0°	*a 5°		h	h1	b	L1	W			0°	5°
113056500	113055400	FGH 13-A 125 12.12 - 0°/5°	12	12	12	125	13	FGI 13	A	☉	☉
113056600	113055500	FGH 13-B 125 14.14 - 0°/5°	14	14	14	125	13	FGI 13	B	☉	☉
113058000	113058100	FGH 13-B 125 16.16-0°/5°	16	16	16	125	13	FGI 13	B	○	☉
113056700	113055600	FGH 13-C 125 10.10 - 0°/5°	10	10	10	125	13	FGI 13	C	○	☉
113056800	113055700	FGH 16-A 125 16.16 - 0°/5°	16	16	16	125	16	FGI 16	A	☉	☉
113056900	113055800	FGH 16-B 150 20.20 - 0°/5°	20	20	20	150	16	FGI 16	B	☉	☉
113057000	113055900	FGH 16-C 125 14.14 - 0°/5°	14	14	14	125	16	FGI 16	C	☉	☉
113057100	113056000	FGH 20-A 150 20.20 - 0°/5°	20	20	20	150	20	FGI 20	A	○	☉
113057200	113056100	FGH 20-C 125 16.16 - 0°/5°	16	16	16	125	20	FGI 20	C	○	☉
113061600	113061700	FGH 20L-A 150 20.20-0°/5°	20	20	20	150	20	FGI 20 L	A	☉	☉
113061800	113061900	FGH 20L-C 125 16.16-0°/5°	16	16	16	125	20	FGI 20 L	C	☉	☉

☉ Stock item | Produto de stock | Itens de stock

○ Available under request | Disponível sobre consulta | Disponible bajo consulta

FGI

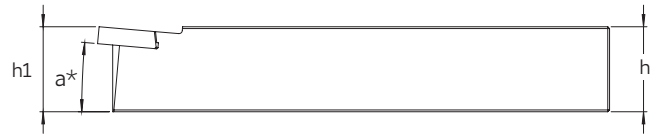
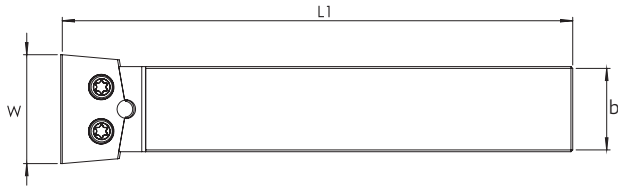


(1) Geometry code	ISO Reference	UNC PH0930	Dimensions (mm)			
			W	S	L	tf
1130553	BLANK FGI 32		32	5,00	19,80	7,00

Stock item | Produto de stock | Itens de stock Available under request | Disponível sobre consulta | Disponible bajo consulta

Insert order code = (1) Geometry Code + (2) Grade Code

Type C



Order code		ISO Reference	Dimensions (mm)					Insert	Toolholder Type	Stock	
*a 0°	*a 5°		h	h1	b	L1	W			0°	5°
113057300	113056200	FGH 32-C 150 25.25 - 0°/5°	25	25	25	150	32	FGI 32	C		

Stock item | Produto de stock | Itens de stock Available under request | Disponível sobre consulta | Disponible bajo consulta

FORMING
Grooving

HEADQUARTERS

PALBIT, S.A.

P.O.Box 4 - Palhal

3854-908 - Branca ALB - Portugal

T (+351) 234540300 | F (+351) 234540301

palbit@palbit.pt

www.palbit.pt

Branch office:

PALBIT México

Emerson 150. Int.803-804. Colonia Chapultepec

Morales Delagación Miguel Hidalgo

C.P. 11570 México DF

T (+52) 5555 454 543 | F (+52) 5552 509 190

info@palbit.com.mx | www.palbit.com.mx